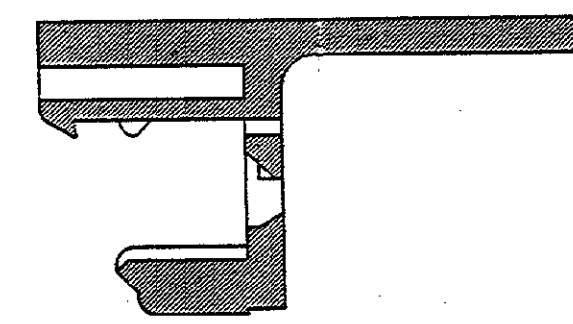
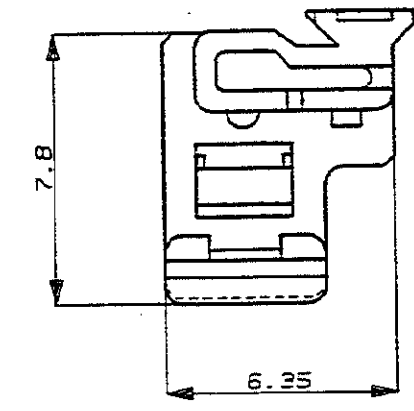
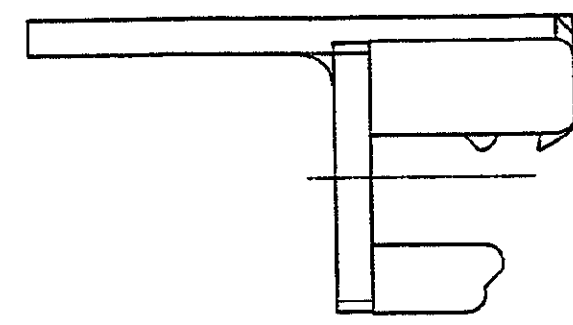
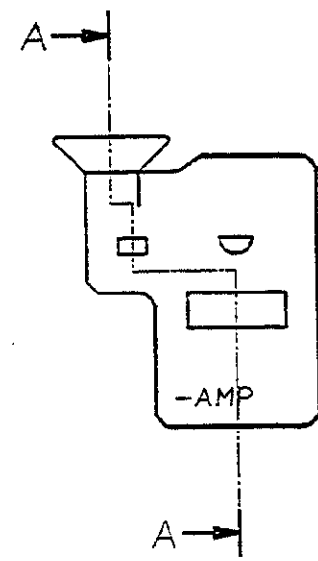


NUMBER C-175916

3rd ANGLE PROJECTION

METRIC

4 3 2 1



断面 A-A
SECT.

注;

- 1. 装着相手型番
 3極キャップハウジング P/N 175912-5
 (1極側に装着)
 5極キャップハウジング P/N 175920-5
 (1極側に装着)

NOTES;

1 MATING HOUSING PART NUMBERS ARE
 175912-5 AND 175920-5

175916-8	ORANGE オレンジ	1
P/N 型番	COLOR 色	NO. 項番

Copyright ©1990 AMP (Japan) LTD. ALL RIGHTS RESERVED.		Copyright ©1990 AMP (Japan) LTD. ALL RIGHTS RESERVED.		AMP		AMP (JAPAN), LTD. Tokyo, Japan		
WIRE RANGE mm ² (AWG)		INSULATION DIA mm		NAME AIR BAG CONNECTOR 1Pos. DOUBLE LOCK PLATE エアバック コネクタ 1極 キャップ用ダブルロックプレート				
MATERIAL PBT		FINISH		GENERAL TOLERANCE		SIZE A3	LOC J	NUMBER C-175916
A	REVISED 2/8/90 J-12513 KO SL	5/8/90	DR. Y. Fujimori 4/26/90	DE. K. Oda 4/26/90	0\leq10 : ± 0.2	SCALE 5-1	REV. A	SHEET 1/1
O	RELEASED 7/8/90 J-12471 KO SI	5/8/90	CHK. S. Kobayashi 5/8/90	APP. M. Nouchi 5/8/90	10\leq30 : ± 0.25			
LTR	REVISION RECORD	DR	CHK	DATE	30\leq100 : ± 0.3			
					ANGLES : $\pm 3^\circ$			

CUSTOMER DRAWING

PRINT DIST DIMENSIONS IN MILLIMETERS. DO NOT SCALE PRINT

AMP-J
REV. 10/89